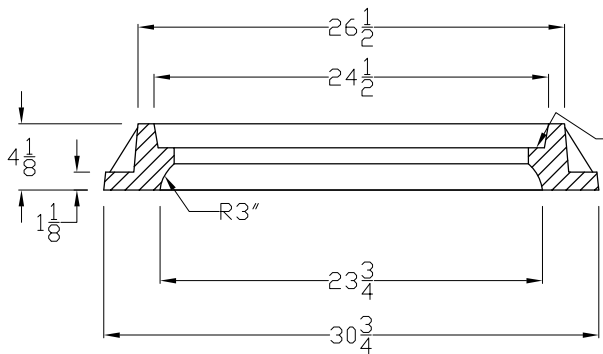
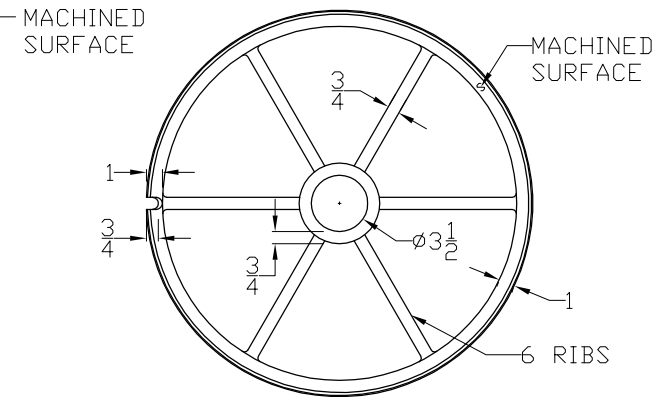
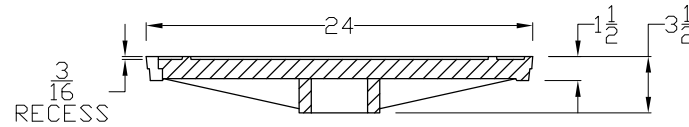


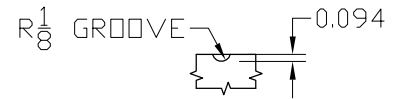
OPTIONAL BOLT DOWN  
2 PLACES, 180 DEGREES APART



FRAME



COVER



O-RING GROOVE DETAIL

(1/4" NEOPRENE O-RING NEOPRENE GASKET SHALL BE GLUED INTO MACHINED GROOVE)

- NOTES:  
 \*MATERIAL: GREY CAST IRON ASTM A48 CLASS 35B  
 \*BEARING SURFACES MACHINED FOR CLOSET, QUIET FIT  
 \*FINISH: DIPPED IN BLACK BITUMINOUS PAINT

22" CLEAR OPENING MANHOLE FRAME AND COVER  
CITY OF SAN DIEGO CIVITA



**SOUTH BAY FOUNDRY**

CAST IRON DIVISION

9444 ABRAHAM SANTEE, CA 92071, USA.

PHONE (619) 956-2780 FAX (619) 956-2788

APPROVAL DATE:

DRAWN BY: TS

WT. FRAME: 193LB  
COVER: 171LB

I.D.# SBF1310

APPROVED BY:

SCALE:

DATE: 10/24/12

SHEET: 1 OF 1